

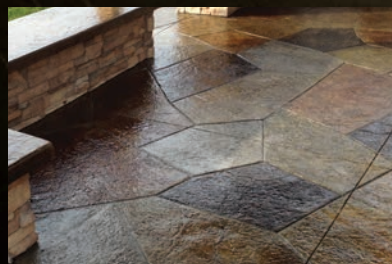


Inspired Concrete... Create **it**. Protect **it**.

EXTERIOR SLAB SYSTEMS

PRODUCT SELECTION &
DESIGN INSPIRATION

With ARTISAN SYSTEMS by SureCrete, the freedom is yours to transform traditional exterior concrete slabs into beautiful & functional surfaces that will “wow” for years to come.



STEPS AND PROCEDURES



SELECTION OF MATERIALS

With ARTISAN Exterior Concrete Slab systems, YOU get to choose the look.

The ARTISAN concrete slab systems can be used to turn existing concrete into almost anything imaginable. Ideal for concrete patios, pool decks, walkways, steps, driveways and other spaces where a fresh new look is desired.

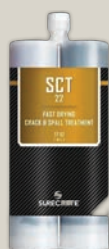
The systems and solutions can range from simple and understated to bold and creative. From simple broom textures to lively textured, patterned and colored works of art, existing concrete slabs can be transformed without the expense of tearing out. Each system lends itself to a desired finished appearance.



01 PREP IT. Surface Preparation

SCR Super Concrete Renovator:

Combines three products in one; a strong detergent, degreaser, and acid to ensure proper cleaning and etching for concrete overlays, stains and sealers.*



SCT-22 Crack & Spall Treatment: A rapid setting, ultra low-viscosity urethane spall and crack treatment for concrete.

02 REPAIR IT. Surface Repair

Fix cracks, spalls and deterioration with products that are compatible with your overlay system

FLASH PATCH: High strength, concrete patching material that is rapid-setting and self-bonding. Patch from feather edge up to 1".

DEEP PATCH: Repairs deep voids in concrete, from 1/8" up to 4" in one lift.*

SUREBOND: Cement-based bonding agent used with Deep Patch and SureStamp as the bond/primer coat.



**Refer to International Concrete Repair Institute Guidelines for surface prep and profile numbers for your specific project, along with SureCrete Technical Data Sheets for each overlay products.*

03 TRANSFORM IT. Exterior Slab Overlay Products

SUREBROOM: A just add water, self bonding, cement -based overlay system for exterior concrete slabs. Great for overlaying concrete with cosmetic imperfections, damage from deicers and other surface imperfections. Its high compressive strength is formulated for a variety of exposure levels and available in both gray and white cement mixes.



SURE STAMP: Single component, just add water stampable overlayment for replication of stamped and custom imprint designs.

SURESPRAY: A thin, sprayable overlay for use over stencils or tape to create a variety of designs and textures.



SURETEX: A medium build overlayment for creating knockdown and deeper grooved textures.

Customize colors and enhance visual texture with compatible colors and product (see section 04 for details)

04 ENHANCE IT. COLOR & DECORATE

From subtle to exotic, SureCrete has a wide range of coloring and enhancing materials to personalize your overlay to look perfect no matter what design criteria is desired.

ECO STAIN: 30 semi-transparent water-based concentrate colors. Can be diluted up to 10:1 with water to create a wide range of color intensities. Additionally compatibility to combine colors for an unlimited color palette.



ECO ACCENT: Dry powder concentrate antiquing agent, when mixed with water can be used to enhance visual texture in stamped and textured surfaces.



VIVID Stain: Unlike other coloration methods, VIVID acid stain chemically reacts with the cement-based surface to create a mottled, variegated color that is one-of-a kind. 11 standard colors can be used over both MICROTEK or SURESTAMP flooring systems.



05 PROTECT IT. SEALERS AND FINISHES



HS 200: A clear, 20% solids, silane based acrylic sealer for exterior concrete surfaces like driveways and sidewalks.



HS 300: A clear, 30% solids, high performance silane based acrylic sealer for exterior concrete overlays and cement-based products.

Salt Protector PLUS

For the ultimate in protective technology, apply one of our TK 290 series siloxane sealers. This will provide you with the ultimate in invisible water repellent technology with a non-color enhanced matte finish. A second optional step would to apply our HS 200/300 (left) where color enhancement and sheen are desired.



290 VOC
Low VOC/
Solvent Based

TK 290
Solvent Based

TK 290 WB
Water Based

ARTISAN SYSTEMS BY SURECRETE & TK PRODUCTS

11400 W 47th Street Minnetonka, MN 55343

P: 800-441-2129 | F: 952-938-8084 | www.surecretedesign.com | www.tkproducts.com