



# EPOXY SAND OVERLAY SYSTEM





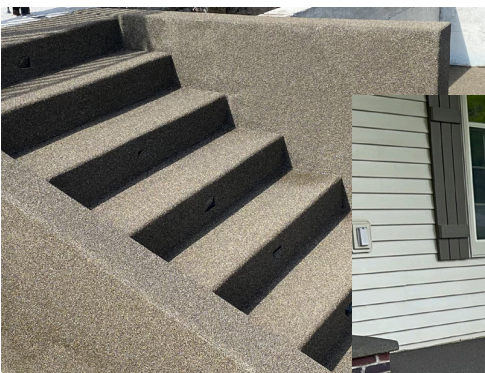


# EPOXY SAND OVERLAY SYSTEM

RESIST is a 100% active, low modulus, two-component epoxy overlay system that when combined with a kiln-dried, properly sourced wear surface aggregate, produces a resilient overlay with benefits not found in traditional concrete overlays.

## FEATURES:

- Tenacious bond strength creating a durable, slip-resistant overlay system.
- Superior resiliency and impact / wear resistance.
- Bonds directly with the surface for exceptional chemical resistance and waterproofing.
- Non-shrink and flexible enough to withstand slight movement and extreme temperature changes.
- Cost effective with a 20 year performance history in DOT applications.
- Easy to use 1:1 mixing ratio.
- Complete system that provides compatible
- Products for crack treatment, surface defects as well as a non-yellowing, color-enhancing, protective top coat.





## THE COMPLETE SYSTEM



### RESIST EPOXY

RESIST Epoxy is packaged in ten gallon & two gallon kits and mixed 1:1.

*Coverage Rate: 150 sq' - 200 sq' per gallon*

### RESIST WEAR SURFACE AGGREGATES

We have sourced Armorstone® as a premier solution for this system made of crushed, kiln-dried basalt aggregate. We offer the colorways, Goldmine & Silver Fox as additional, kiln-dried sand aggregate options.



Armorstone



Goldmine



Silver Fox



### RESIST TOP COAT

RESIST Top Coat is a clear, non-yellowing high solids solvent-based acrylic that provides additional moisture and chemical resistance.

*Each gallon covers 175-250 sq' (based on application method and ambient conditions).*

## ACCESSORY PRODUCT



### RESIST REPAIR MORTAR

Fast-cure cement-based repair mortar to skim coat imperfections in concrete surface.





 SURECRETE®

**RESIST**