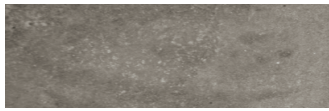


TOP COLOR CHOICES



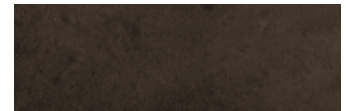
PEWTER (62)



ESPRESSO (50)



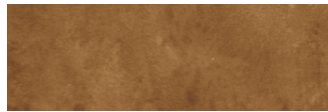
DOMINO (48)



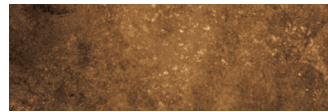
MAGNET (57)



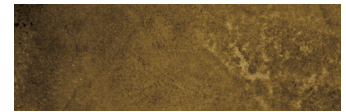
BEECHNUT (43)



SAFARI TAN (64)



KAYAK (55)



KODIAK (56)

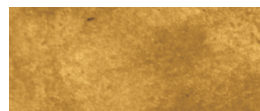
ADDITIONAL COLOR CHOICES



TERRA COTTA (29)



ARBOR GREEN (40)



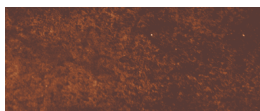
AUTUMN GOLD (41)



AZTEC GOLD (42)



BERMUDA BLUE (44)



BURNT CRIMSON (46)



COOL FOREST (47)



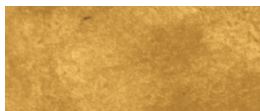
EPIC BLUE (49)



FIR GREEN (51)



GREEN OLIVE (53)



HARVEST YELLOW (54)



MIDNIGHT BLUE (58)



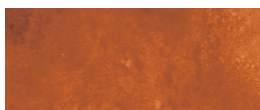
NAVY BLUE (59)



ORANGE BLOSSOM (61)



OAK (60)



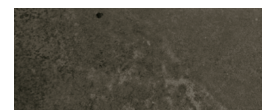
RUBY (63)



SPANISH RED (65)



THAI GREEN (67)



TITANIUM GRAY (68)



WALNUT (69)



WHITE (70)



AVAILABLE IN
3 SIZES

4 OZ
32 OZ
128 OZ*

NOTE: * THIS SIZE IS MADE TO ORDER WITH A MINIMUM QUANTITY OF 2. COLORS ARE BASED ON GREY CONCRETE WITH STAIN APPLIED AT STANDARD STRENGTH, NO ADDITIONAL DILUTION, WITH TWO APPLICATIONS AND IS SEALED WITH A PENETRATING COLOR ENHANCING SEALER. SURECRETE RECOMMENDS THE USE OF SCR (SUPER CONCRETE RENOVATOR) FOR SURFACE PREPARATION PRECEDING THE APPLICATION OF ECO-STAIN. COLOR SAMPLES ON THIS CHART REPRESENT THE COLOR OF FINISH AS CLOSELY AS POSSIBLE. COLOR VARIATIONS MAY OCCUR DUE TO DIFFERENCES IN CEMENT, AGGREGATES AND METHODS OF APPLICATION.

QUICK FACTS

Creates a variegated color effect.



Scan to Download
Technical Data Sheet

Uses: Unsealed concrete slabs, overlays, cement-based wall finishes on concrete castings, both interior and exterior applications.

Coverage: 200-300 sq' at standard strength per gallon.

Application: use a with a sprayer, brush, sponge or roller for a variety of finished appearances.

MUST BE SEALED AT COMPLETION

See recommended companion products below.

PRO TIPS

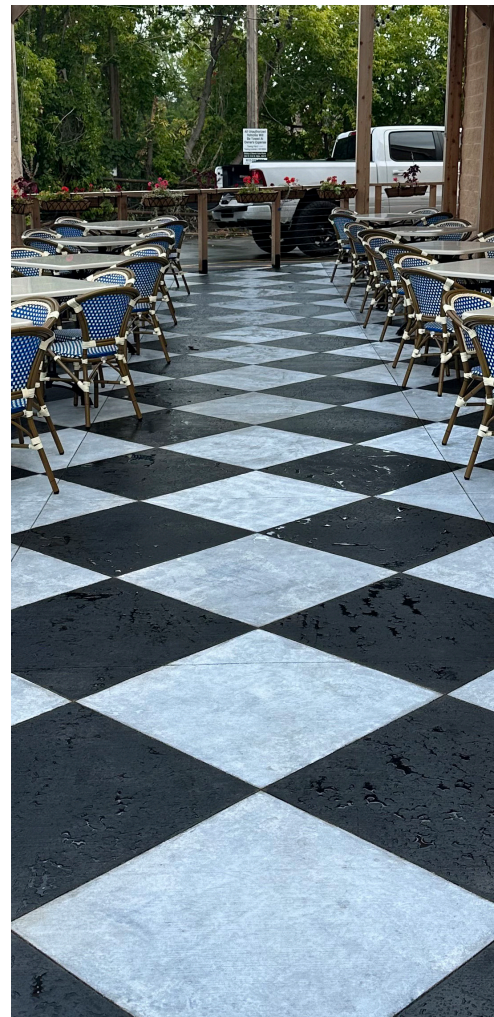
Be sure surface is SSD (Surface Saturated Dark) prior to applying. Let material completely dry before sealing. Check the surface by buffing with a white cloth to determine if there is residue that comes off, if so, carefully remove with a soft broom before sealing.



Scan to Watch
Installation Video

In situations where any undesirable hard lines of color are present after applying ECO Stain, a swing buffer with a white pad can be run over the surface to tone down unwanted variations.

Some very dense, smooth surfaces may need additional prep work to allow the stain to penetrate. Please contact our Technical Support Team for additional assistance.



COMPANION PRODUCTS



PREP:SCR

Super Concrete Renovator combines three products in one – a strong detergent, degreaser, and acid – to ensure proper cleaning and etching for concrete overlays, stains, and sealers.



INTERIOR SEALER: SUPER WB

This water-based acrylic sealer packs a high-performance punch that is ideal for interior use, but also versatile enough for external applications around pool decks & patios. Already formulated to meet Low VOC compliance, this is your partner to finish the job with excellence.



EXTERIOR SEALER: HS200* & HS300

These solvent-based acrylic sealers are formulated with premium attributes, such as slow-evaporating solvents and high quality blends of acrylic for optimal concrete protection.

Also available in Low VOC formulations for states with those regulations.